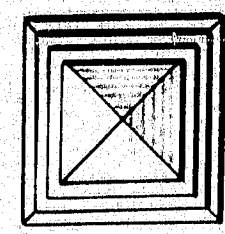


NOTE—
SKETCH SHOWS PLATE FULL SIZE. PLATE TO BE
1 1/2" x 2 1/2". BOLTS TO BE LOCATED AS SHOWN IN ORDER
TO CLEAR RIVET HEADS IN COVER PLATE OF END POST.



INTERNATIONAL BRIDGE

MADAWASKA, ME.—EDMUNDSTON, N.B.

BUILT 1921



JOINT CONSTRUCTION BOARD

DEPT. OF PUBLIC WORKS, CANADA

JAMES B. HUNTER, DEPUTY MINISTER

S. J. CHAPLEAU, ENGINEER

L. DE B. ROY, RESIDENT ENGINEER

MAINE STATE HIGHWAY COMMISSION

WILLIAM M. AYER, CHAIRMAN

FRANK A. PEABODY, LYMAN H. NELSON

PAUL D. SARGENT, CHIEF ENGINEER

CONTRACTORS

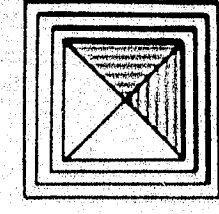
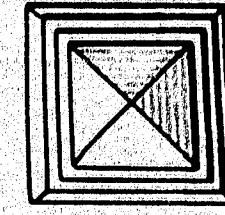
SUBSTRUCTURE— D. C. BURPEE & SON

SOUTH DEVON, N. B

SUPER-
STRUCTURE

THE CANADIAN BRIDGE CO., LTD.

WALKERVILLE, ONT.



INTERNATIONAL BRIDGE

MADAWASKA

EDMUNDSTON

MAINE

NEW BRUNSWICK

BUILT 1921

THE HIGHWAY COMMISSION

THE DEPARTMENT OF PUBLIC WORKS

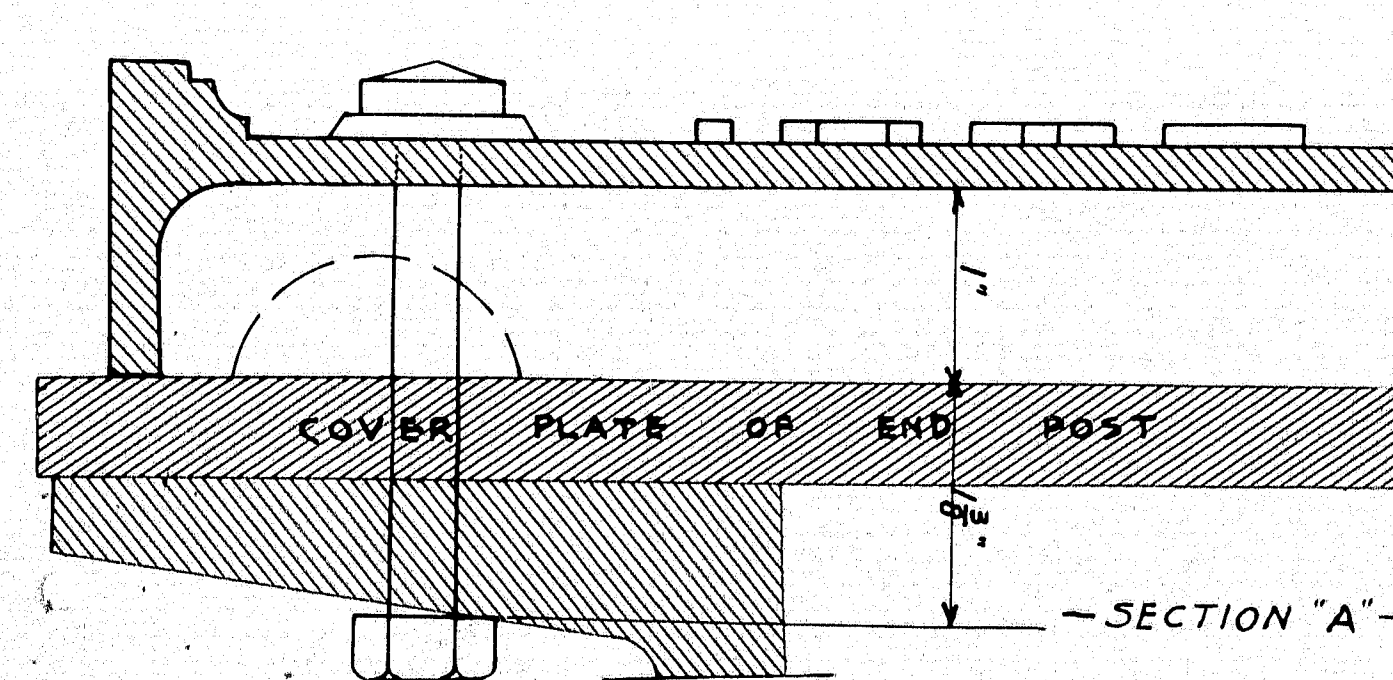
OF THE

OF THE

STATE OF MAINE

DOMINION OF CANADA

U.S.A.



—NOTE—
SKETCH SHOWS PLATE FULL SIZE PLATE TO BE
1 1/2" x 2 1/2" BOLTS TO BE LOCATED AS SHOWN IN ORDER
TO CLEAR RIVET HEADS IN COVER PLATE OF END POST

0 1 2 3 4 5 INCHES

3-128